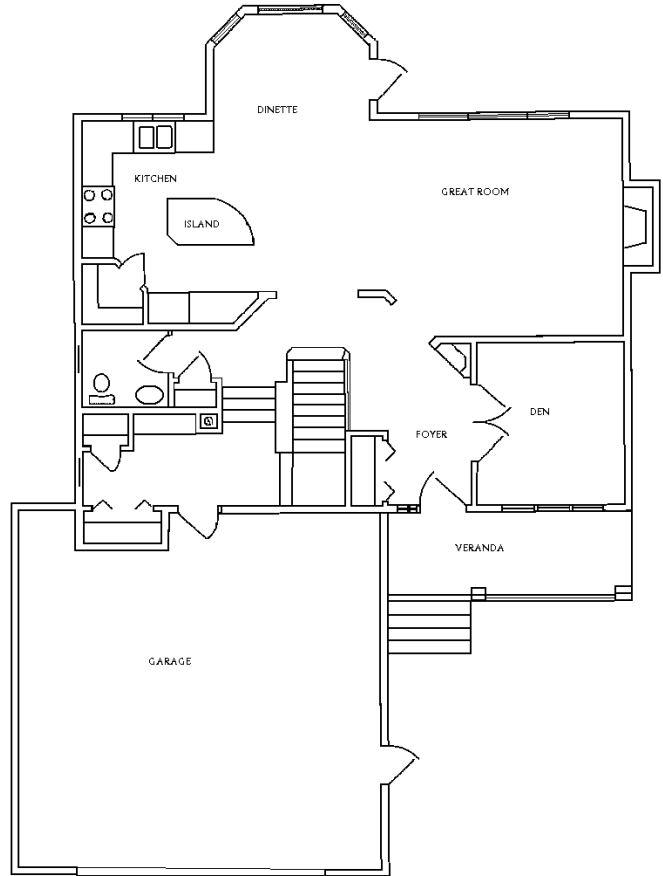
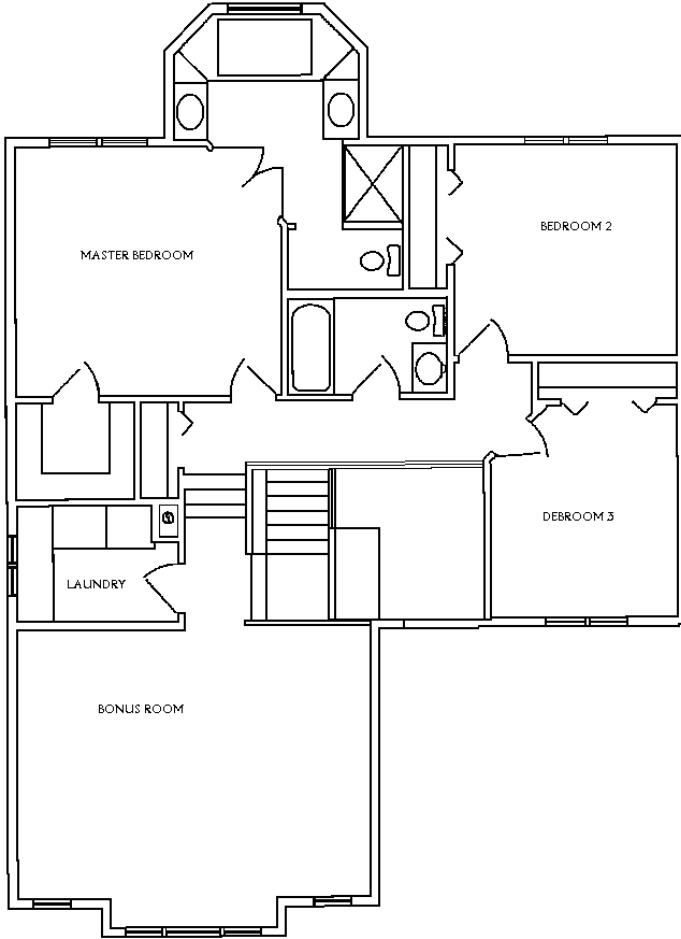
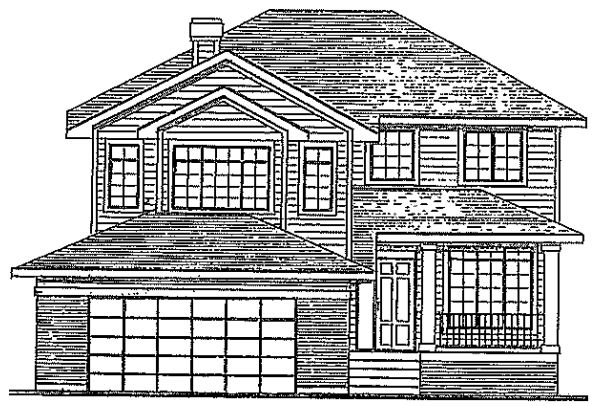


## THE DORSET 2229 SQ FT



The Dorset by KCM Construction Ltd. is a stunning home with many excellent features. Covered front veranda provides shade and snow shelter at your front door. Tiled foyer leads to a den with double French doors and large front window. Spacious living room with gas fireplace and more large windows open to dining nook and kitchen with island and walk in pantry. The main floor also features powder room and 3 steps down to a mud room/garage entry with coat and broom closets as well as custom bench with cubbies and hooks. Fantastic second floor boasts a huge bonus room, laundry room, full bath and 3 bdrms including a Master bedroom with walk in closet and French doors to 5 piece ensuite. This plan is also available with modified bonus room and 4<sup>th</sup> bedroom!

**FOR INFORMATION CALL  
KIM LISSWAY AT REMAX 780 814 1090.  
Email: [lissway@telus.net](mailto:lissway@telus.net)**

Due to changes and improvements resulting from continuing research and developments, we reserve the right to alter design and specifications without notice.  
This plan is property of KCM Construction LTD.