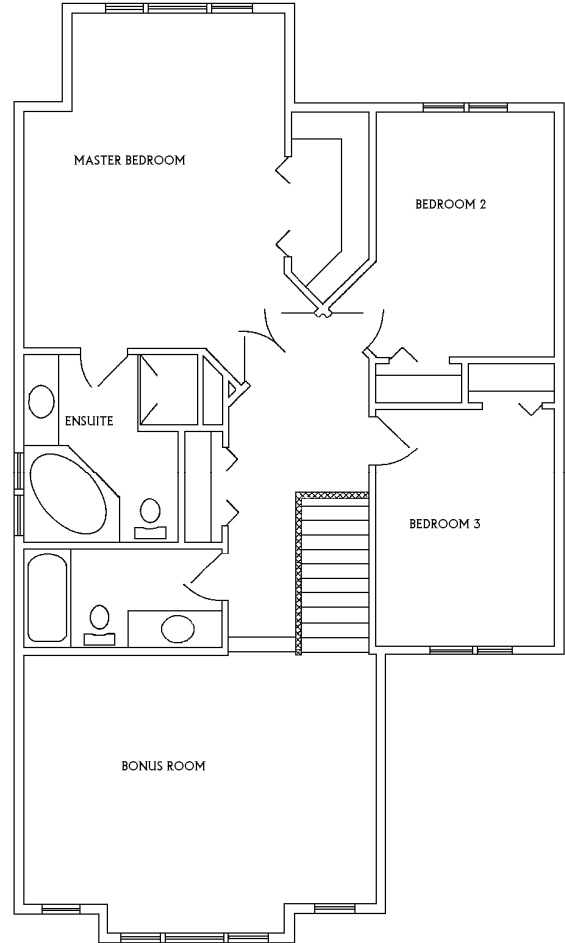
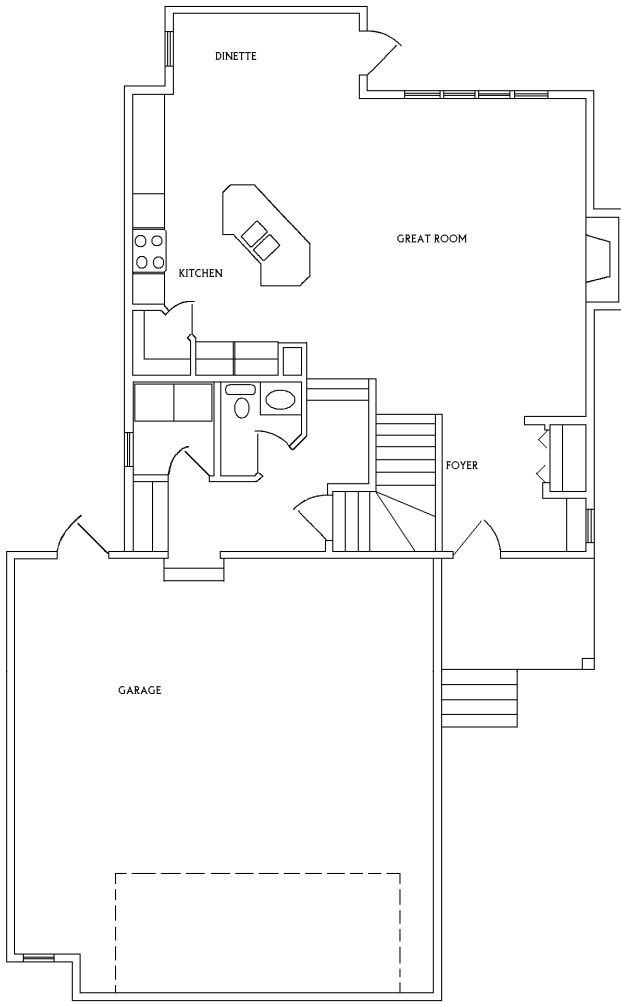


THE LUXTON 1925 SQ FT



SPECIAL FEATURES:

The Luxton by KCM Construction is loaded with great features! Greeted by a covered front veranda and large front foyer with built in bench, you will feel right at home. From the entry you can see into the living room with gas fireplace and through to the large island kitchen-with an abundance of cabinets and counter top-and dining area with garden door to deck. The main floor also features a mud room at the entrance to the garage with coat hooks & cubbies and laundry room. The second floor features a huge bonus room, a spacious master bedroom and ensuite with corner tub. The large attached double garage with front window allows for extra work or storage space.

**FOR INFORMATION CALL
KIM LISSOWAY AT RE/MAX 780 814 1090.
Email lissoway@telus.net**

Due to changes and improvements resulting from continuing research and developments, we reserve the right to alter design and specifications without notice. This plan is property of KCM Construction LTD.