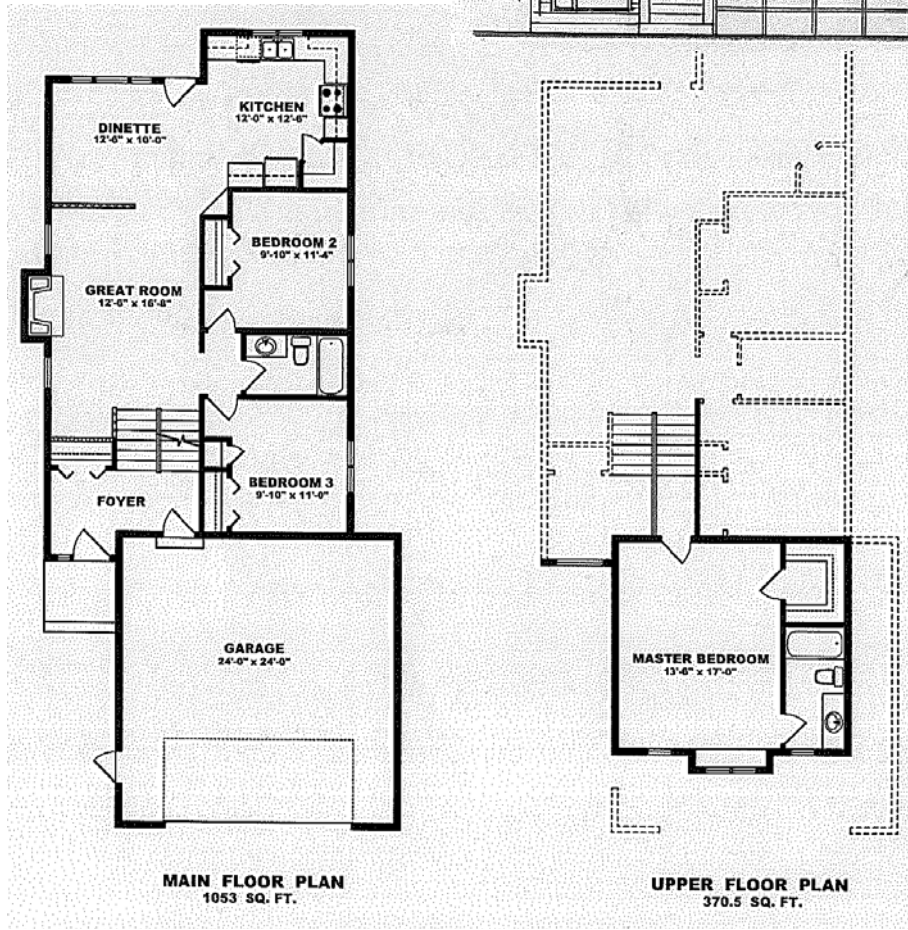


**THE SIDNEY 1423 SQ FT**



The Sidney by Devonshire Homes is a great new Modified Bilevel plan. Spacious foyer leads upstairs to great room featuring a modern fireplace. Vaulted ceilings through entry, great room and dining area. Dining area has garden door to future deck. Large kitchen faces back yard and provides lots of cabinets and corner pantry. There are 2 bedrooms and a full bath on the main floor as well. Upstairs is the Master Bedroom with walk in closet and 4 piece ensuite. Attached double garage is drywalled and taped.

FOR INFORMATION CALL KIM LISSOWAY AT RE/MAX 780 814 1090.  
lissoway@telus.net

Due to changes and improvements resulting from continuing research and developments, we reserve the right to alter design and specifications without notice.  
This plan is property of KCM Construction LTD.