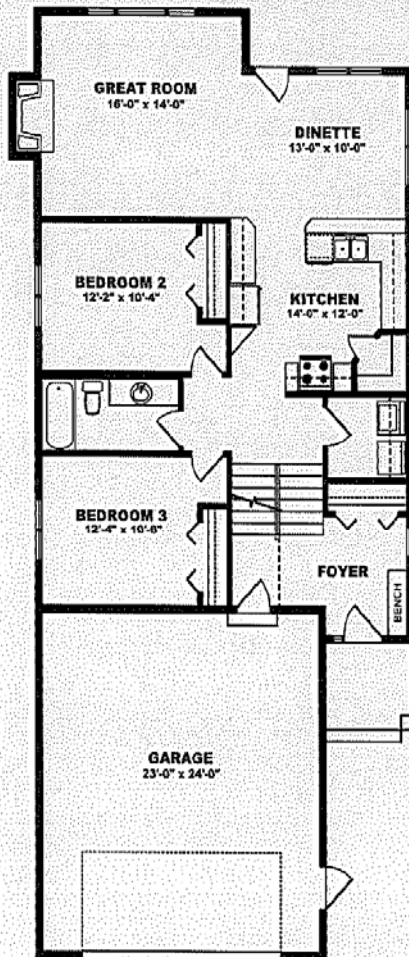
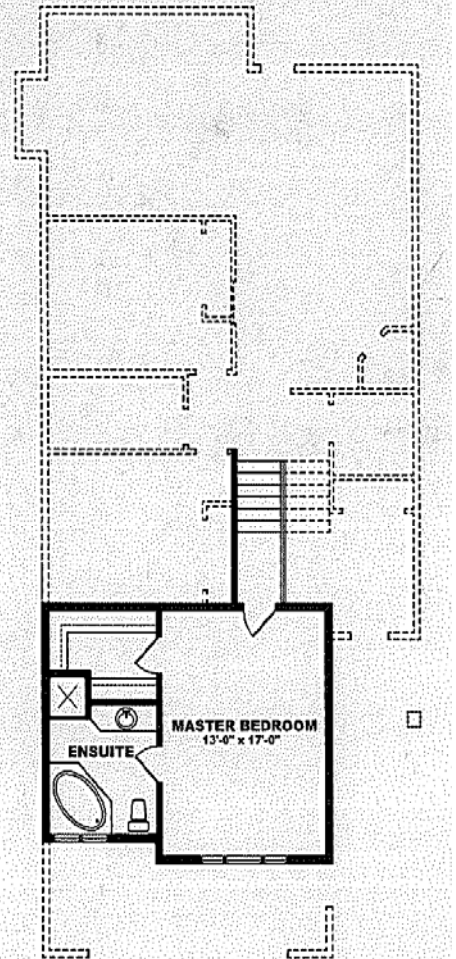




THE WINDSLOW 1623 SQFT



MAIN FLOOR PLAN
1223 SQ. FT.



UPPER FLOOR PLAN
400.5 SQ. FT.

The Windslow by KCM Construction is a new Modified Bilevel plan with lots of great features! Large entry area with bench, main floor laundry, fantastic kitchen with lots of cabinets and counter space including eating bar and walk in pantry. The dining is open to the great room with fireplace and large windows! The Master bedroom above garage boasts large walk in closet and nice ensuite with corner tub and separate shower.

FOR INFORMATION CALL
KIM LISSOWAY AT RE/MAX 780 814 1090.
Email: lissoway@telus.net

Due to changes and improvements resulting from continuing research and developments, we reserve the right to alter design and specifications without notice.
This plan is property of KCM Construction LTD.