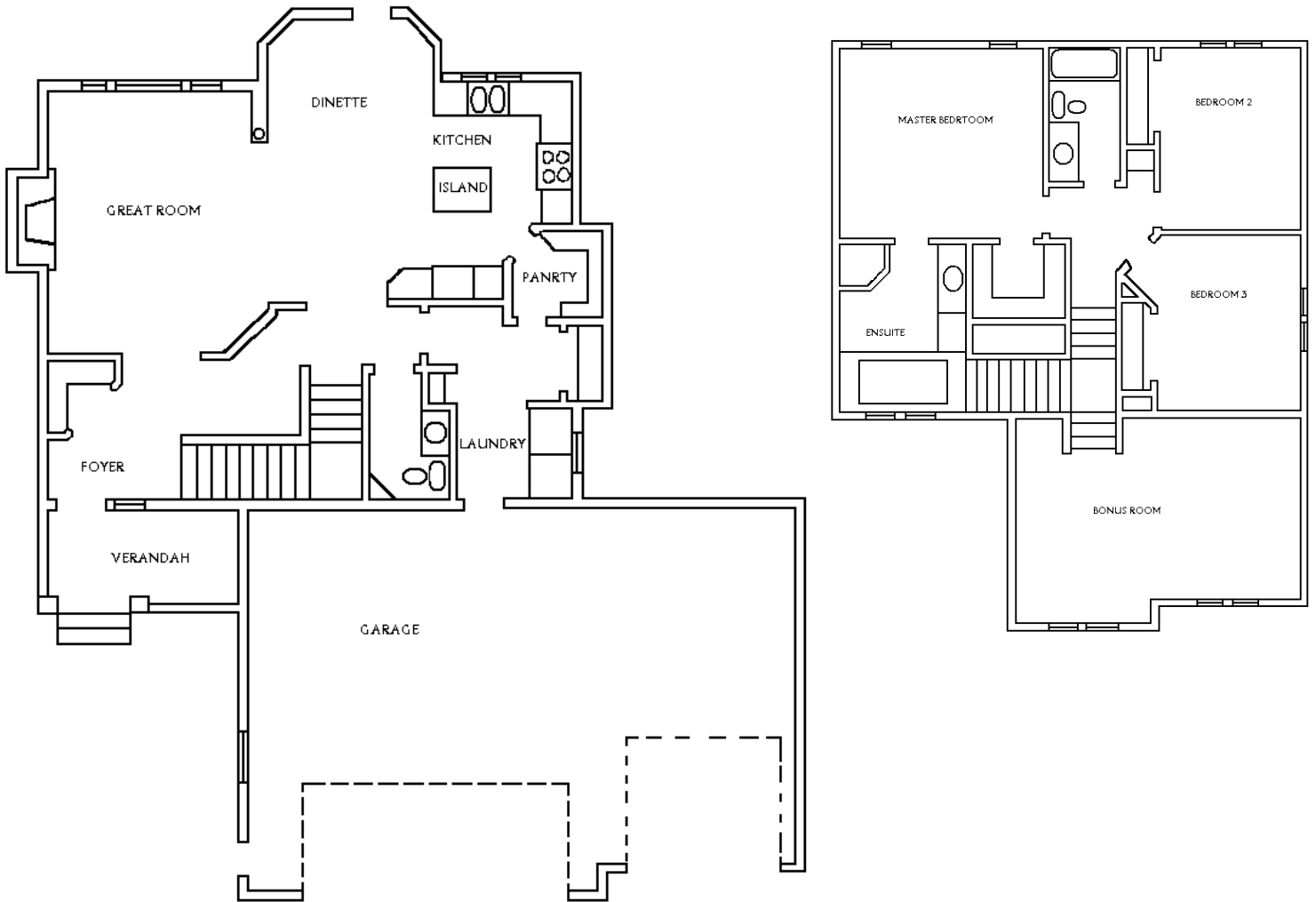




## THE SHEFFIELD 3 CAR 1996 SQ FT



The Devonshire Sheffield is a stunning 1996 sq. ft. 2 storey home with a large front entry, leading to living room with beautiful fireplace, dining area with garden door to future deck, kitchen with walk thru pantry to garage entrance and main floor laundry. Huge bonus room which can be modified to 4<sup>th</sup> bedroom and bonus area. Master suite boasts walk in closet and gorgeous ensuite with double sinks and soaker tub. Attached triple garage drywalled and taped.

FOR INFORMATION CALL KIM LISSOWAY AT RE/MAX 814 1090.  
[lissoway@telus.net](mailto:lissoway@telus.net)  
[www.kimlissoway.com](http://www.kimlissoway.com)

Due to changes and improvements resulting from continuing research and developments, we reserve the right to alter design and specifications without notice.  
 This plan is property of Devonshire Homes (Grande Prairie) Inc.